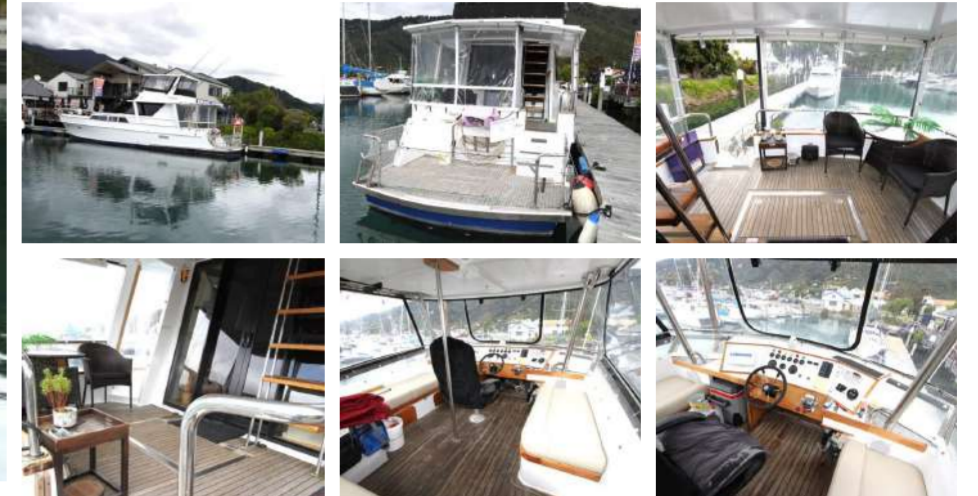




15m Jim Young Cruising Launch

\$125,000.00



Specifications

Year	1985
Make	Jim Young
Style	Cruising Launch
Stock Number	10651

Construction

Hull Construction	Triple Diagonal Bottom, Double Diagonal Glassed
Loa Approx	16
Beam Approx	4.1
Draft Approx	2
Transom	Walk Through Transom With Large Stern Platform

Engine

Enginemade	Volvo Penta
Engine Model	Twin TAMD 60'S
Engine Year	Approx. 1985
Engine Fuel	Diesel
Drive System	Velvet V Drives, Shafts

Tankage

Fuel Capacity Approx	600L
Fuel Tank	2 X Tanks
Water Capacity Approx	900L
Water Tank	S/S X 2

Interior

Berths	2 Large Doubles, Plus Two Singles
Headroom	Full
Toilet	2 X 12v Electric
Cooking	Gas, 4 Burner Oven And Grill, BBQ And Microwave
Cabin No	3

Accessories

Safety Equipment	4 Bilge Pumps, Life Jackets, EPIRB, VHF
Navigation Gear	Compass, Lowrance Hook 9" Plotter/Sounder
Ground Tackle	30kg Manson Supreme With Approx 100m Of 10mm Chain
Capstan	3T With Remote

Talk to the Listing Broker
Contact The Listing Broker

Gavin Stichbury

0272 757 716
gavin@viningmarine.co.nz
Picton

15m Jim Young Cruising Launch

15m Jim Young launch - Ideal vessel for extended cruising in the Sounds and beyond. Powered by twin 250hp Volvo Penta TAMD diesel engines, she cruises comfortably at 12 knots with a top speed of approximately 16 knots. A bow thruster ensures easy handling in tight spaces. Designed for self-sufficiency and comfort, she features six solar panels delivering around 900W, a 16kVA genset, separate start and house battery banks with linking capability and full LED lighting, including underwater lights. Entertainment is covered with a Bluetooth stereo system, while the hardtop flybridge with clears and cockpit clears offer protection and visibility in all conditions. Walkaround side decks, large boarding platform with safety rails and ladder make movement and water access safe and easy. Inside, the vessel boasts a spacious three-cabin, two-head layout with electric toilets, a fridge and freezer, hot water heater and a newly installed fireplace. The saloon has been recently updated with new upholstery, and the galley comes equipped with gear included. This launch is well set up for comfortable, extended cruising and is ready for her next adventure. Call Gavin Stichbury at Vining Marine Gulf Group on 0272 757 716 for more information.

