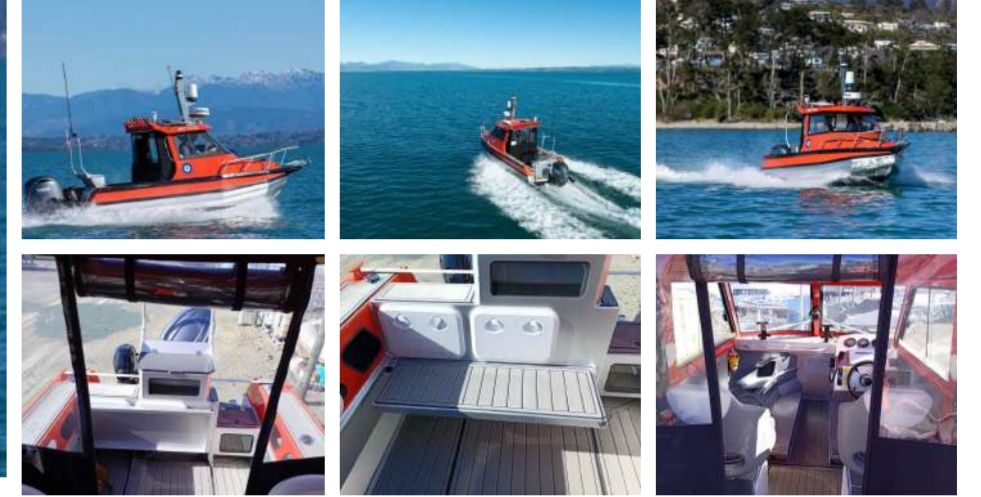




# Sea King Explorer Hardtop 600

**\$95,000.00**



## Specifications

Year	2021
Make	Pontoon
Model	Sea King 600
Style	Offshore Fishing
Stock Number	10653

## Construction

Hull Construction	Alloy
Builder	Sea King
Loa Approx	6.0
Beam Approx	2.2
Draft Approx	1
Hull Type	Alloy Pontoon
Transom	Walk Through

## Engine

Enginemade	Yamaha
Engine Year	2023
Hours Approx	56
Engine Fuel	4 Stroke Petrol
Drive System	Outboard
Comment	Mercury 6hp Aux.

## Tankage

Fuel Capacity Approx	150
Fuel Tank	Alloy

## Interior

## Accessories

Safety Equipment	VHF Uniden Radio
Navigation Gear	GPS Lowrance, Radar Lowrance, Fish Finder Lowrance Auto Pilot
Ground Tackle	6m Of Aprpr, 30m Of Aprpr
Capstan	Electric Anchor

## Sea King Explorer Hardtop 600

6 Meter Alloy Workboat in MNZ Survey. Launched 2021. Enclosed Hardtop. One owner from new. 2024 Yamaha F150 4 Stroke outboard (low hours).

Tandem axle galv and braked road trailer (Current Reg and WOF). Mercury 6HP Aux outboard (as new). 150-liter underfloor fuel tank. Well maintained.

Extras include:

- Dual Battery System with 230V Victron Invertor
- Lowrance HDS 9 GPS Plotter/Sounder/Radar & Autopilot
- Electric Anchor Windlass Controlled from Helm Station
- Hydraulic Trim Tabs
- Hydraulic Steering
- Deck Wash Pump
- Roll Down Canvas and Clears to Enclose Cabin
- VHF Radio
- Compass
- Soft Flooring
- Windscreen Wipers
- Bait Tank
- Cabin Lights
- Rocket Launcher

Enquire Arlene Kruger at Vining Marine Gulf Group on 021 845 154 for more information or for a viewing - Vessel is based in Nelson.

### Features

Tandem axel trailer galvanized road trailer with brakes, sold with a current WOF and registration

Is in current Marine Survey #143582

Docking lines included

Last anti-fouled - Dec 2023

**Talk to the Listing Broker**  
Contact The Listing Broker

**Arlene Kruger**

021 845 154  
arlenek@viningmarine.co.nz  
Nelson

